

# GraviTflo Dosing System

One of a Kind Unique Dispensing System Solution

PATENT: 8,875,726  
MADE IN THE USA

## SAFTFLO®

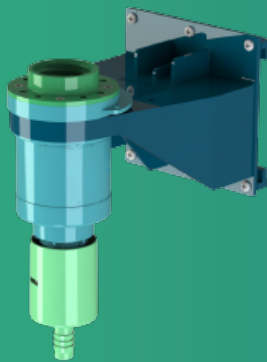
### ► What is it and what does it do?

The **SaftFlo® GraviTflo** is a unique dispensing system featuring our Closed Loop technology in an inverted application. **GraviTflo** is the only solution of its kind and is ideal for areas without a water source or where water pressure is a concern.

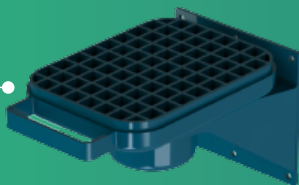
Once the chemical bottle is placed on the dispenser, the insert valve opens to release chemical into the reservoir of the dispenser. When the end-user is ready to dispense the concentrate for dilution, they simply press up on the dosing mechanism, and a metered amount of chemical concentrate empties into the receiving bottle, mop bucket, or other type of container.



Dosing System



Drip Tray



### ► BENEFITS

- **SAFETY:** No chemical contact dispensing offers increased safety to operators with Closed Loop technology
- **EASY INSTALL:** No water source needed to install or operate system
- **LOW COST:** Low equipment costs and no maintenance costs or service calls
- **SUSTAINABLE:** Closed Loop system ensures enhanced safety when transporting concentrated chemical preventing further leaks and spills
- **ADAPTABLE:** Can be used for filling chemical bottles/mop buckets

### ► KEY FEATURES

- Sizes: 38mm, 40mm, 53mm, 60mm, 63mm, 70mm
- Drip tray
- Hanging kit- includes wall rail, clamps and screws (not shown)
- Please contact your sales representative for color options

### Industries Used In



Hotels



Schools



Health Spa  
/ Gym



Hospitals



Grocery  
Stores



## RD Industries

[rdindustries.com](http://rdindustries.com) • [sales@rdindustries.com](mailto:sales@rdindustries.com) • 800.759.7090

► We are ready to provide your perfect solution.  
Let's talk! Visit us online, email us or call us today.