

# NPT Cap Adapter

MADE IN THE USA

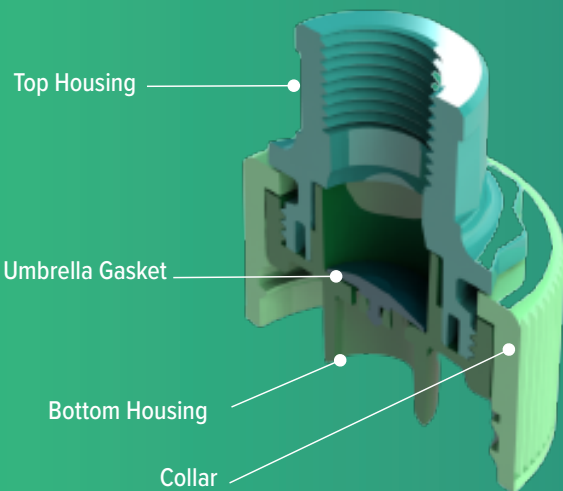
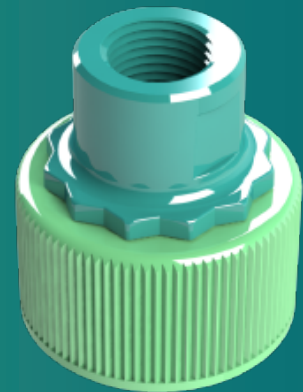
Safest Solution for Securing  
Chemical Lines into Containers



## ► What is it and what does it do?

The **SaftFlo® NPT Cap Adapter** offers a more secure solution when attaching the chemical line to the container. A hose with a thread is screwed directly into the **NPT Cap Adapter**, providing a sturdier connection that is suited towards industrial environments, e.g., water treatment.

A large diameter on the dispensing tube gives higher flow rates. It is also used when larger chemical concentrate doses are required. The threaded attachment also acts as a barrier for dirt and dust from entering the chemical container.



NPT (National Pipe Thread) is the USA national standard for pipe threads. An adapter can be used to change the thread to BSP (British Standard Pipe), which is used throughout Europe and the many parts of the world.

## ► BENEFITS

- Fits any connection compatible with NPT
- A sturdier connection compared to a traditional cap adapter
- Recommended for industrial environments
- Compatible with BSP (British Standard Piping) with the use of an adapter

## ► KEY FEATURES

- Available in standard and medium flow rates
- Sizes: 38mm, 40mm, 53mm, 60mm, 63mm
- Materials Included: Wide range of plastic for chemical compatibility
- Proprietary key lock available
- Please contact your sales representative for color options

### Industries Used In



Hotels



Schools



Health Spa  
/ Gym



Hospitals



Grocery  
Stores



**RD Industries**

[rdindustries.com](http://rdindustries.com) • [sales@rdindustries.com](mailto:sales@rdindustries.com) • 800.759.7090

► We are ready to provide your perfect solution.  
Let's talk! Visit us online, email us or call us today.