

# Tamper Evident

Secondary Safety Solution for Closed Loop System

PATENT: 10,618,710  
MADE IN THE USA

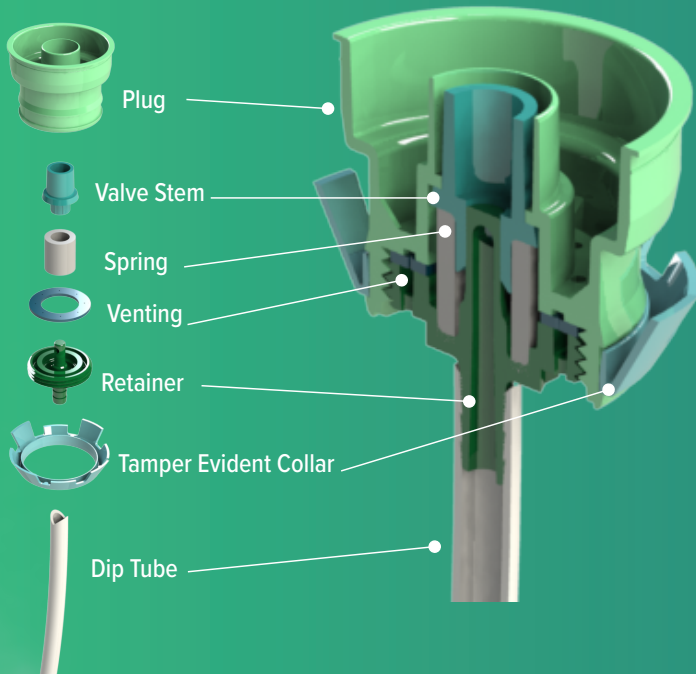
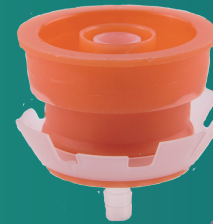
## SAFTFLO®

### ► What is it and what does it do?

The **SaftFlo® Tamper Evident** is a reliable safety check for our Closed Loop system. An HDPE collar with lugs snap to the bottom of the insert substrate to provide a secure connection, preventing unintended removal of the bottle insert.

When an insert with the **Tamper Evident** collar is inserted into the bottle, the lugs expand open under the bottle neck, making it virtually impossible to remove the insert from the container. It can withstand a pulling force of 70lbs; stronger than any competition in the market.

The end-user replaces the ship cap with a **SaftFlo® Cap Adapter**, which opens the insert valve, releasing the chemical. A fully Closed Loop system ensures that end-users are never exposed directly to chemical concentrates.



### ► BENEFITS

- An additional safety solution to lock the chemicals inside the container to minimize chemical waste
- Provides visible evidence if anyone has tampered with the Closed Loop connection

### ► KEY FEATURES

- Compatible with all 38mm and 40mm bottle inserts
- Can withstand a pulling pressure of up to 70lbs
- Three length variations of locking lugs to accommodate different container sizes: 0.18", 0.22", 0.25" / 0.457cm, 0.558cm, 0.685cm
- Material: HDPE
- Can be recycled when used in conjunction with the OneFlo® bottle inserts
- Please contact your sales representatives for color options

#### Industries Used In



**RD Industries**

[rdindustries.com](http://rdindustries.com) • [sales@rdindustries.com](mailto:sales@rdindustries.com) • 800.759.7090

► We are ready to provide your perfect solution.  
Let's talk! Visit us online, email us or call us today.